



# FY 13 AITS Metrics

---

*Administrative Information Technology Services*

## Metrics

### Administrative Information Technology Services

#### Overview

This collection of metrics is designed to supplement and support the AITS strategic plan and progress report. The metrics were collected and compiled by the individual groups within AITS as a means for measuring progress and efficiency.

Organizations within AITS have been collecting metrics for several years. This document consolidates these metrics and also identifies new items to measure. AITS, and its customers throughout the University of Illinois, will review these measurements.

This report is intended to:

- Provide a transparent overview of AITS operations and performance.
- Set performance goals and operational expectations for the next year.
- Determine if the metrics provided in the report are still relevant and if any are missing, then implement processes for collecting the information that was not available for this report.
- Refine views of the data to increase the utility of the information and make interpretation easier.

The measurements that are presented individually in this report can be combined or refined for use in presentations, discussions, and other reports to assist the AITS customers.

---

# Table of Contents

---

## ADSD Metrics

# of projects closed by functional area by fiscal year (ITPC and AITS internal)	2
AITS CMDB software.application configuration items FY13	2
TAM/ESC work request survey overall average by month	3
Enterprise objects used by month	3
Enterprise object usage by applications by month	4
Active DBs	4
# of host servers by month	5
# of active databases and host servers by fiscal year	5
Volume of data in TBs by fiscal year	6
ESC security requests processed by quarter	6
ESC security requests processed by fiscal year	7
Hours spent by the Departmental Systems team on departmental systems support and projects	7
# of issues opened by system in QA tool	8
# of issues closed by system in QA tool	8

## COE Metrics

Banner Self Service availability by month	9
Banner Self Service availability by fiscal year	10

## Administrative Information Technology Services

Banner Self Service sessions by month	10
Banner Self Service usage by fiscal year	11
Backup storage by data center by fiscal year	11
Allocated configured capacity in TBs	12
Banner patches, upgrades, and modifications fiscal year totals	12
Average number of Service Desk cases closed by AITS by month	13
COs by Change Category by Month	13
Change Request Lead Times – Successful Emergency/Pre-Approved	14
Change Request Lead Times – Successful Major/Normal	14
Changes by month with CCA approval time to Implementation	15
Change Order Type by Month – High/Normal Priority, Total All Types	15
Change Order Type by Month – Major High/Normal, Normal High/Normal	16
Change Requests Submitted	16
Change Orders not Successful	17
Rollout Related Outages	17
Total Changes in Rollouts	18
Average # of Changes During Weekend Rollouts	18
Late Rollouts	19
AITS weekend days worked	19
Average number of broker connections per month	20
Messages Received and Delivered by Fiscal year	20
Messages available by fiscal year	21
Sync message consumption	21

## Administrative Information Technology Services

Total Sync Messages by Fiscal year	22
CIs Changed by Date Range	22
Decommissioned CIs and Servers by Date	23
New CIs, servers, and implementations by date	23
Problems reported in USD	24
% of tickets closed by Service Desk by month	24
% Help Desk and Operations Center abandoned calls by month	25
Total batch requests by fiscal year	25
Equipment supported by department by fiscal year	26
Age of equipment supported for FY11	26

## DS Metrics

Outages	27
EDDIE Sessions	28
ETL Processing	28
BI/DW Access Requests	29
BI/DW Support Cases Closed	29
BI/DW Support Cases Opened by Request Area	30
Days to Close: Upper Quartile (75%)	30
BI/DW Training	31
BI/DW Work Requests	31
BI/DW Projects worked on in FY12	32

## ESA Metrics

# of unused Banner accounts by fiscal year	33
Security Service Desk tickets closed by fiscal year	33
Comparison between ViewDirect reports available and used by month	34
SECAPP requests for Banner, iBuy, and UiERA by fiscal year	34
Average hours to complete and approve SECAPP requests by fiscal year	35
# of notifications sent to USC's by fiscal year	35
# of unused ViewDirect accounts by month	36

## ITPC Metrics

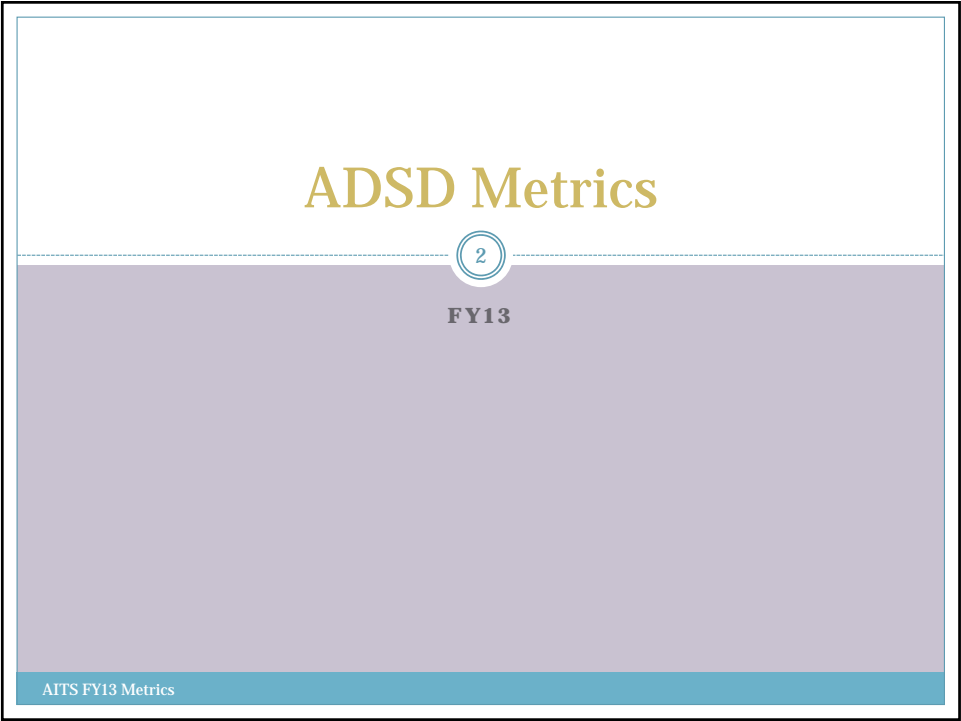
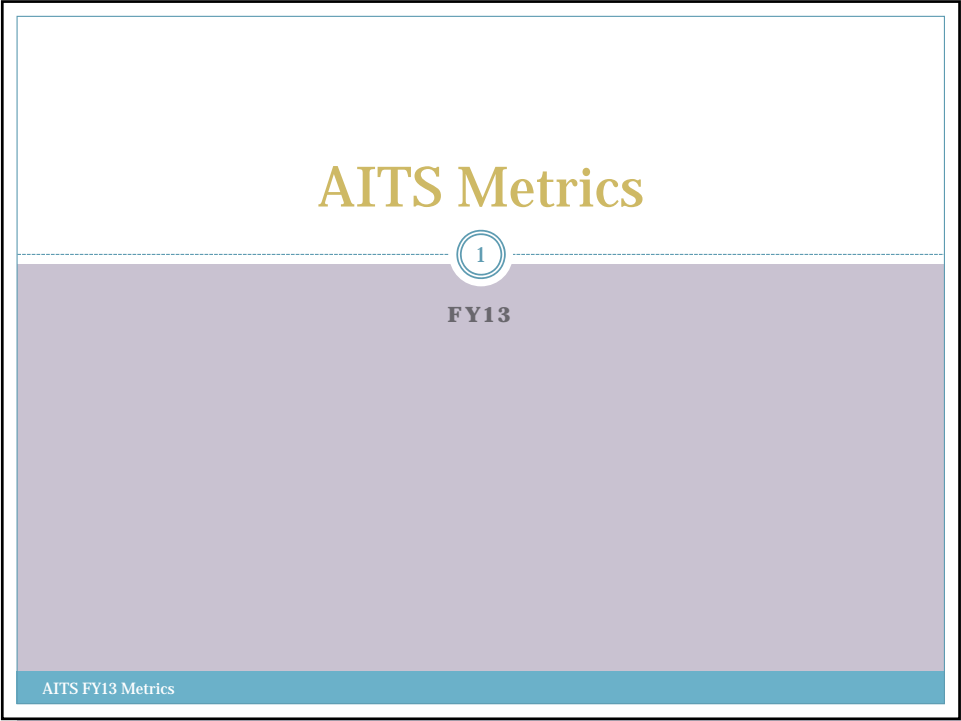
ITPC-AITS Resource Projection FTE distribution by function as of July 2013	37
Project resource projections for major initiatives as of July 2013	37
Completed ITPC projects by fiscal year	38
Budget Performance	38
Average % of projects on track for budget by fiscal year	39
Schedule Performance	39
Average % of projects on track for schedule by fiscal year	40
Work requests closed and outstanding by fiscal year	40

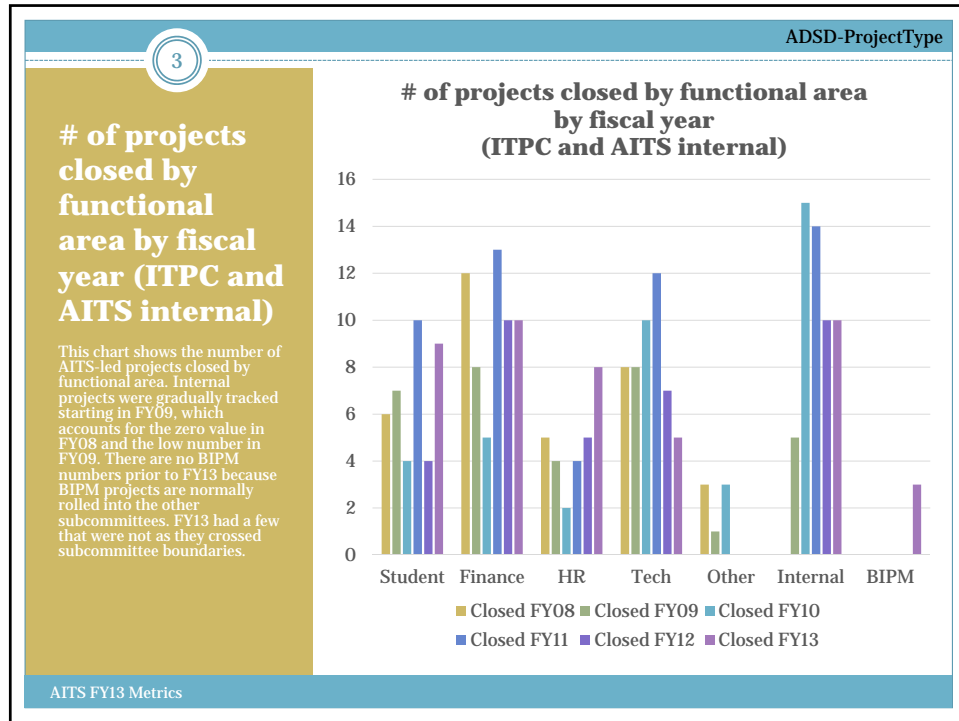
## PMO metrics

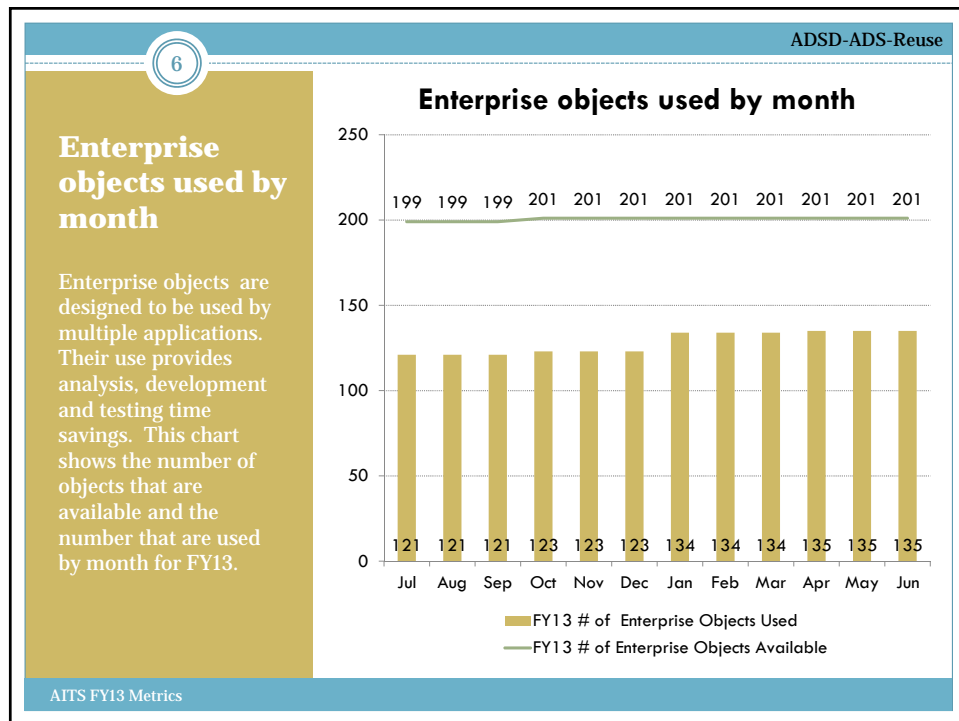
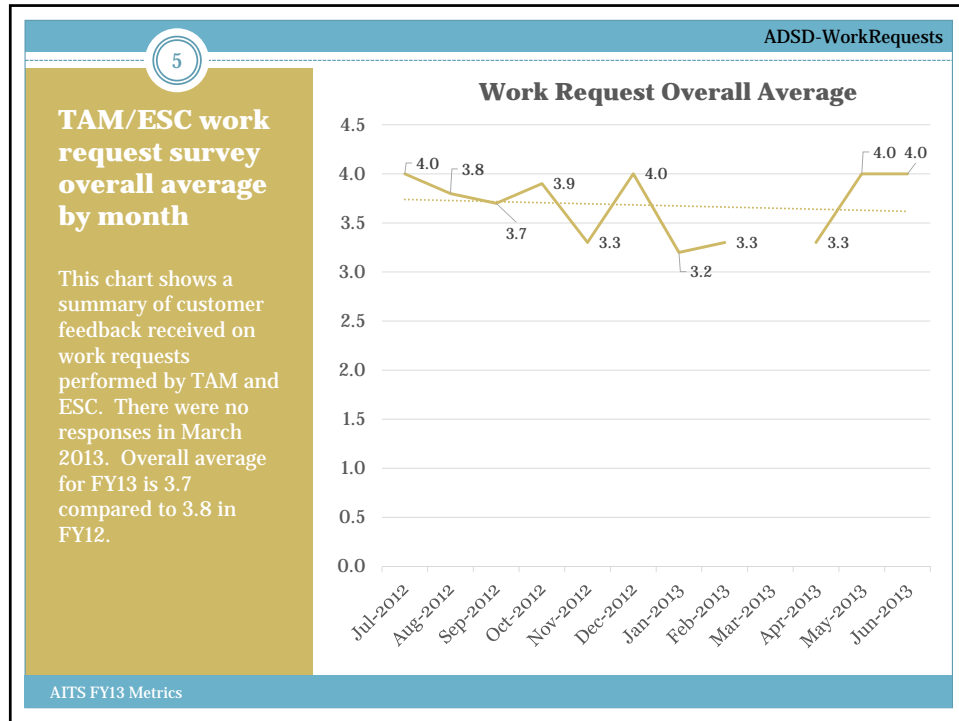
# of points of scheduled communication with the University	41
ITPC Project engagement by quarter	42
Project performance by fiscal year	42

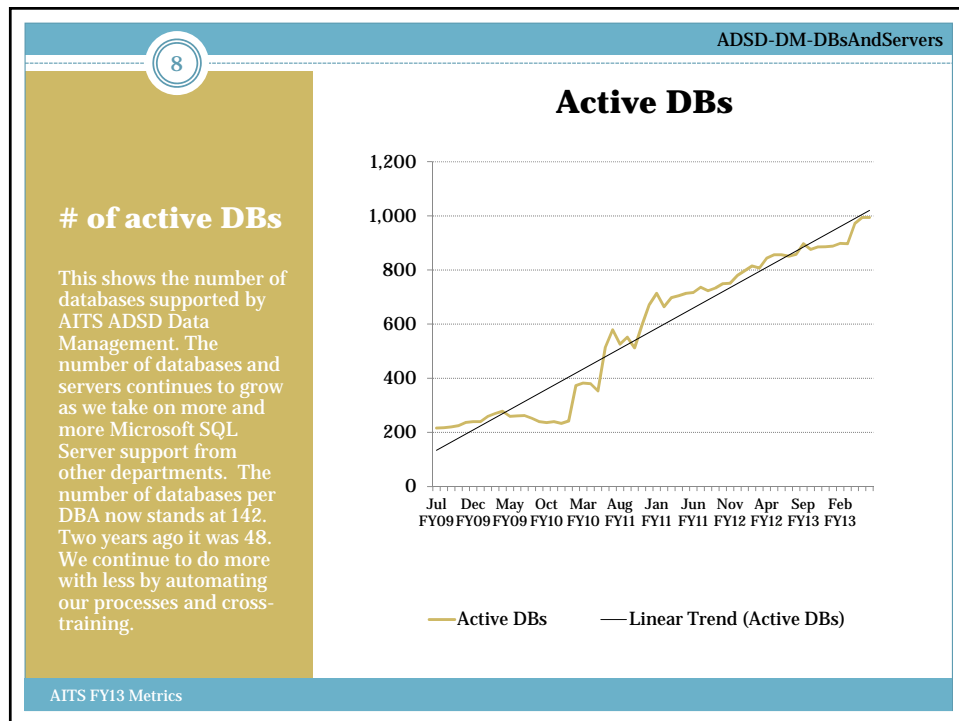
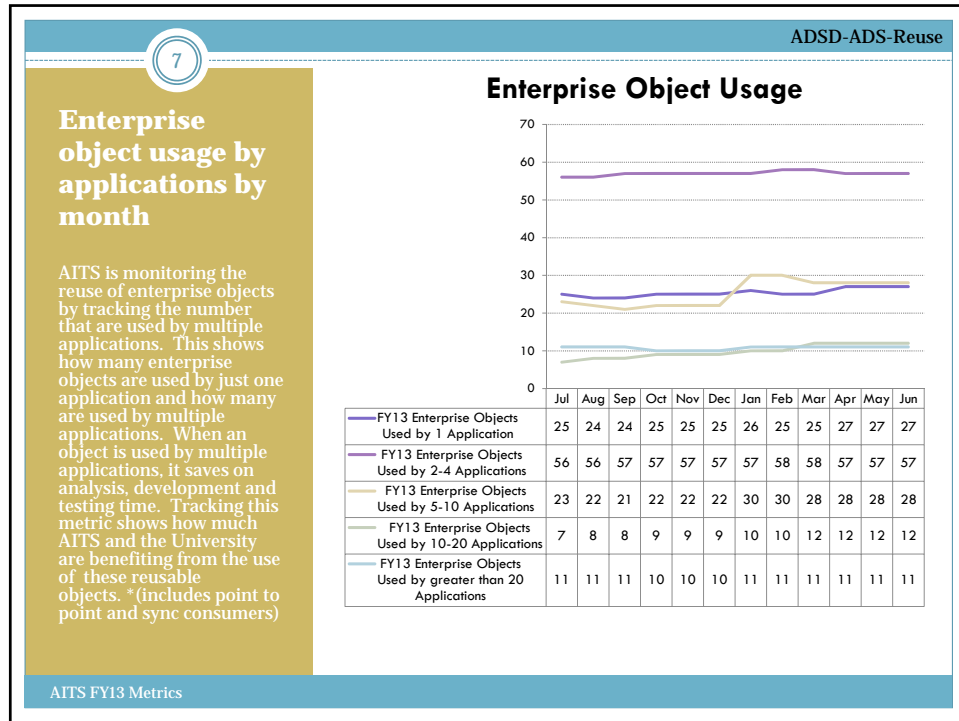
## Staffing and Time Metrics

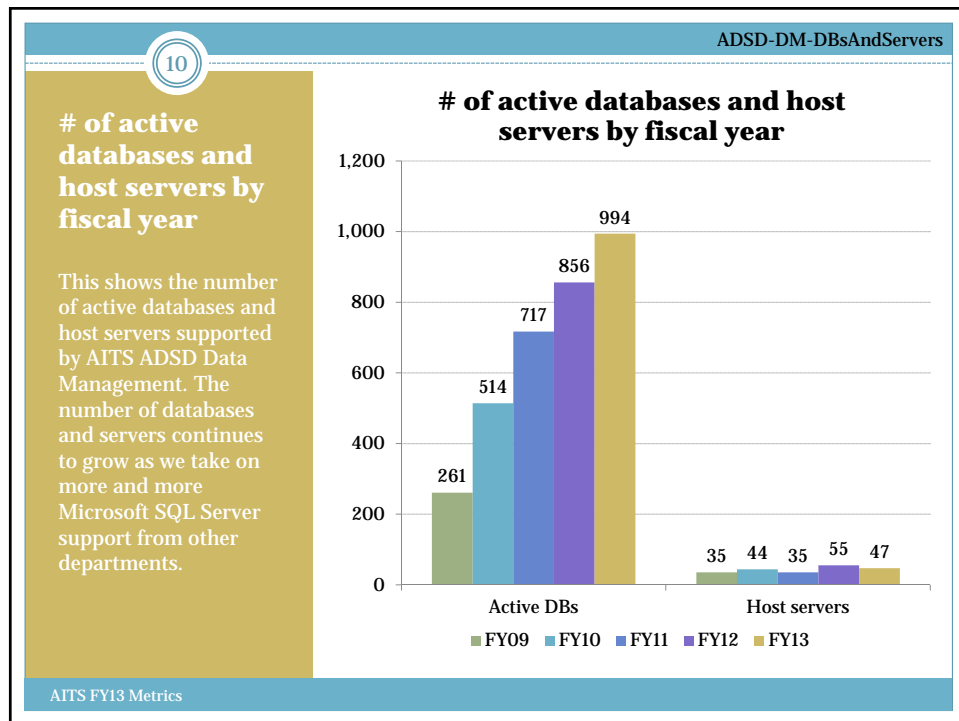
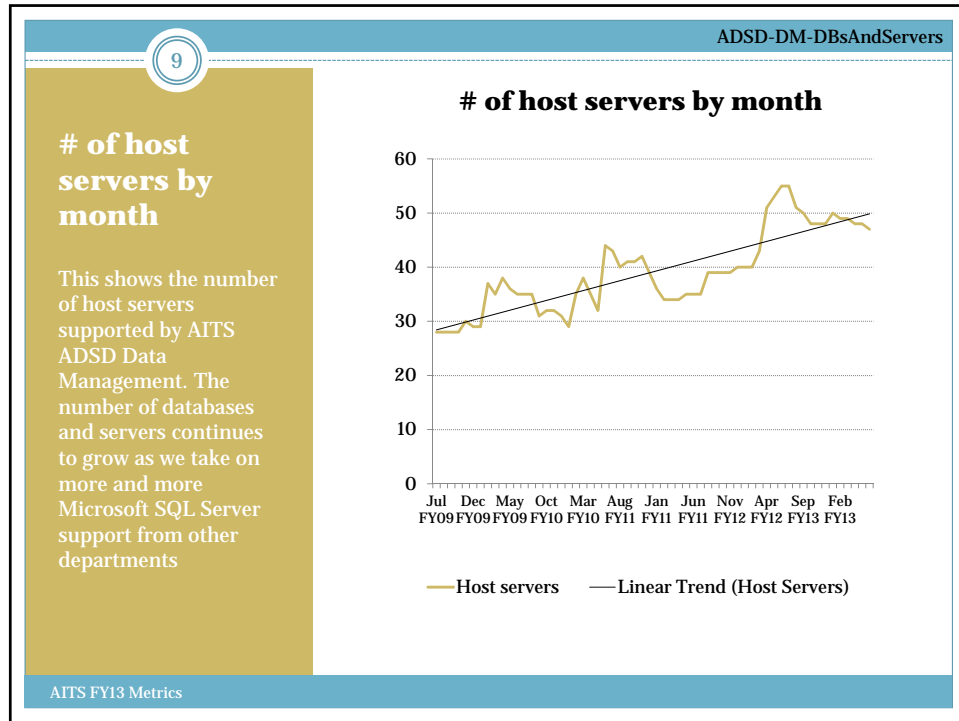
AITS hours of effort for FY13	43
AITS percentage of overall effort by fiscal year	44

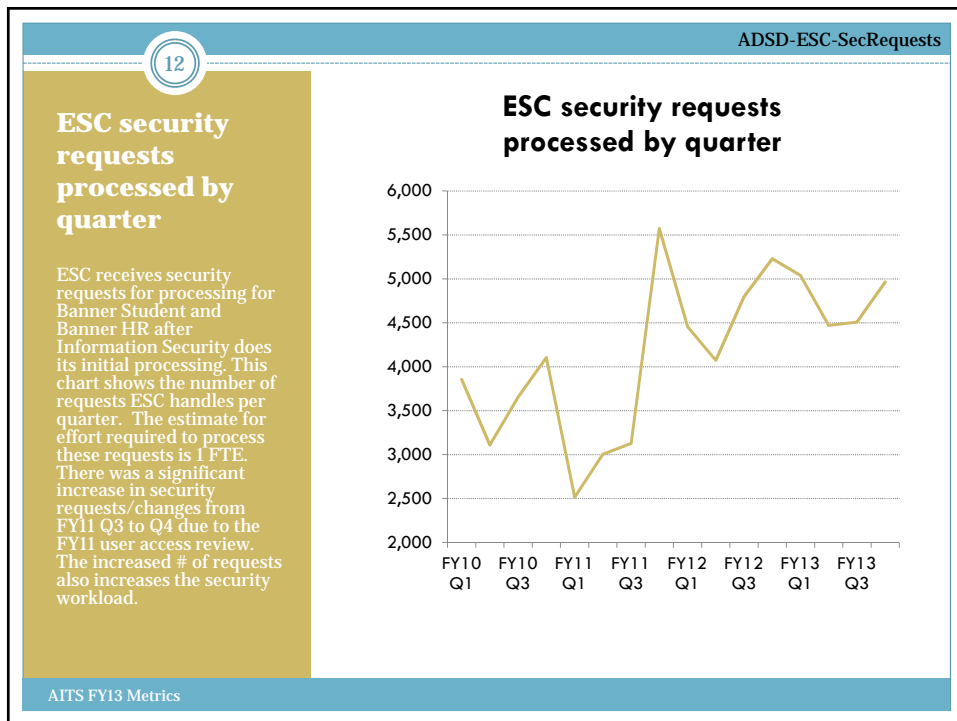
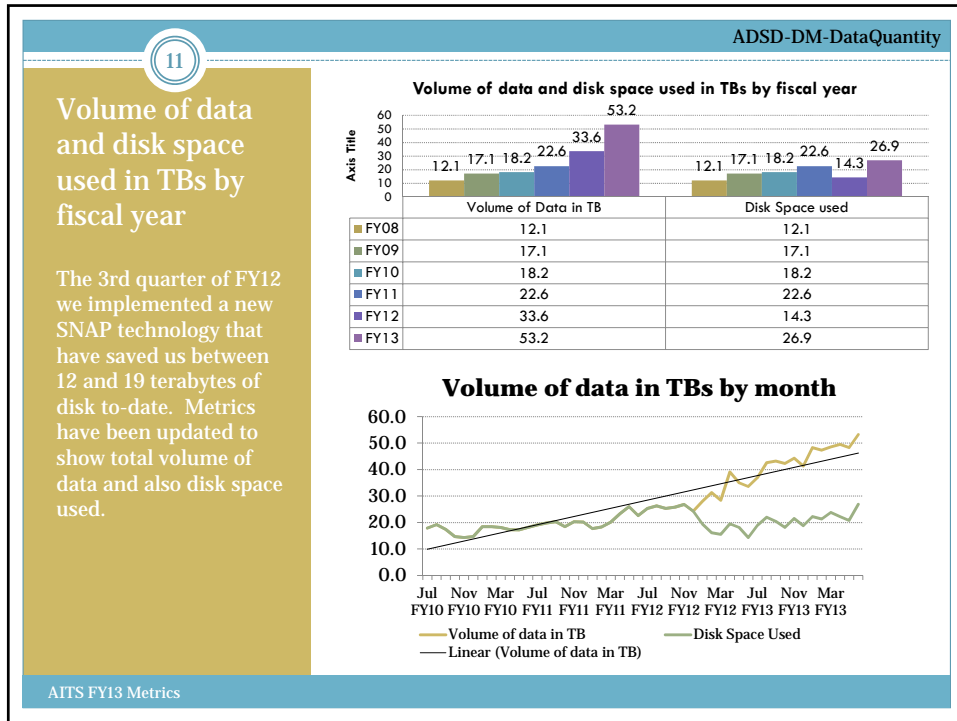


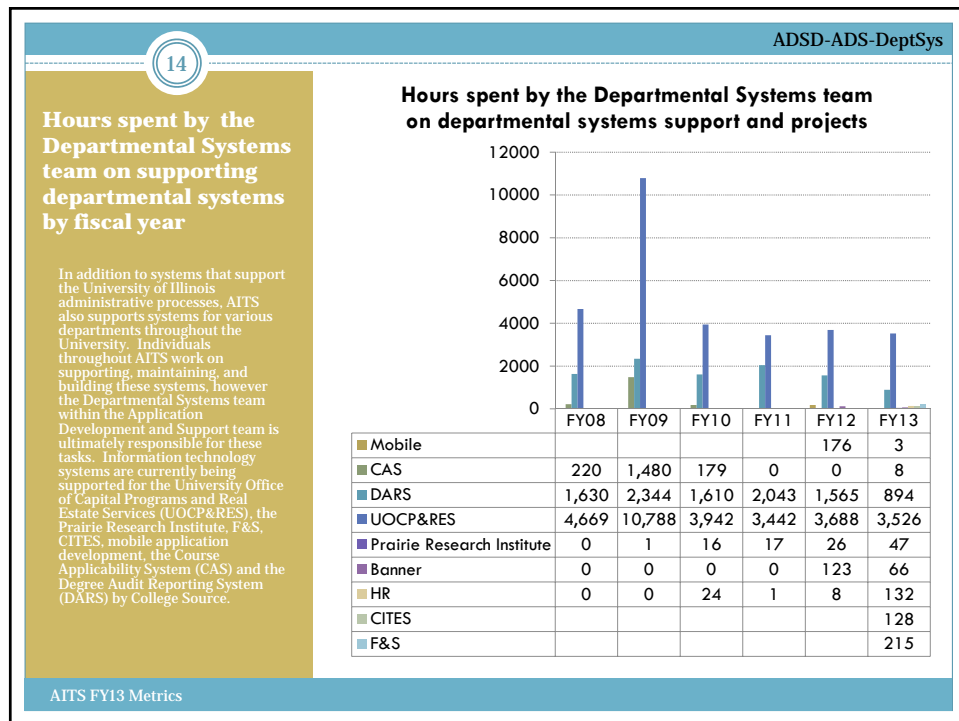
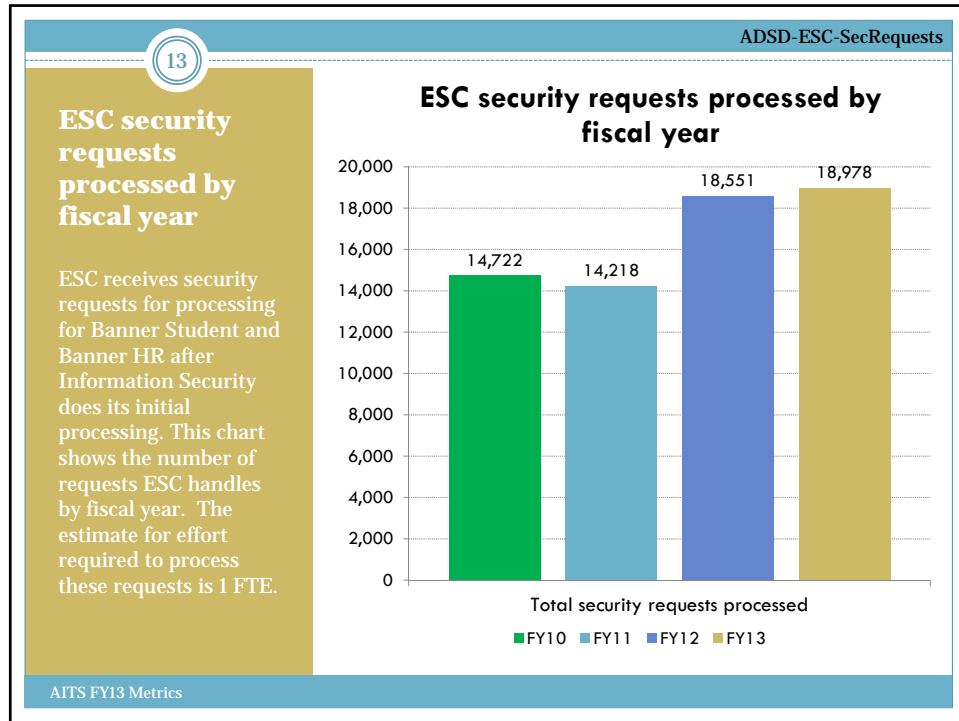


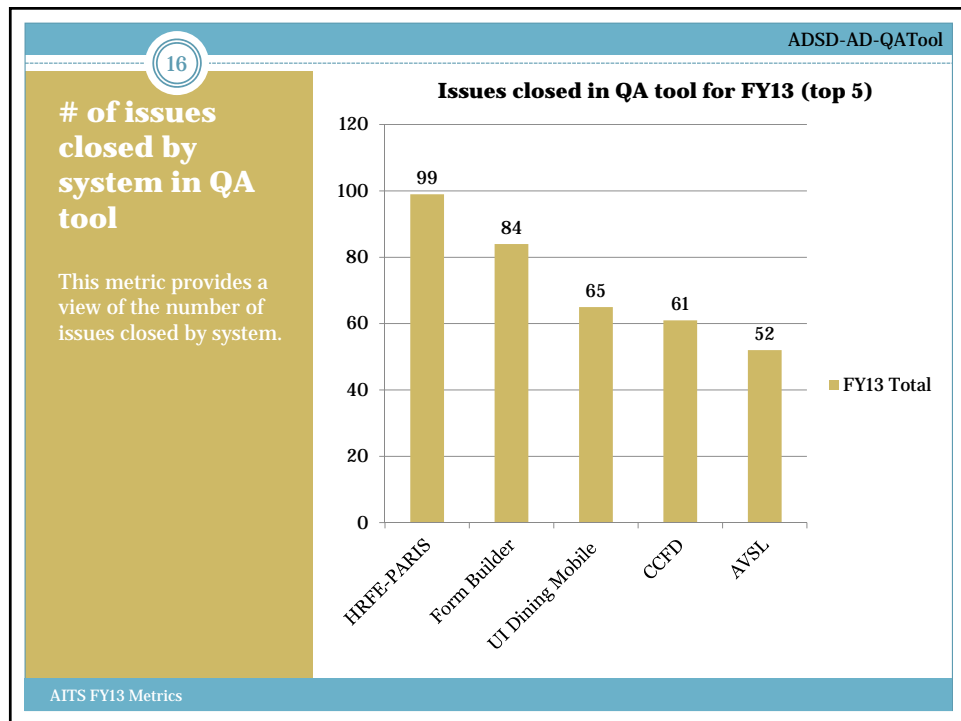
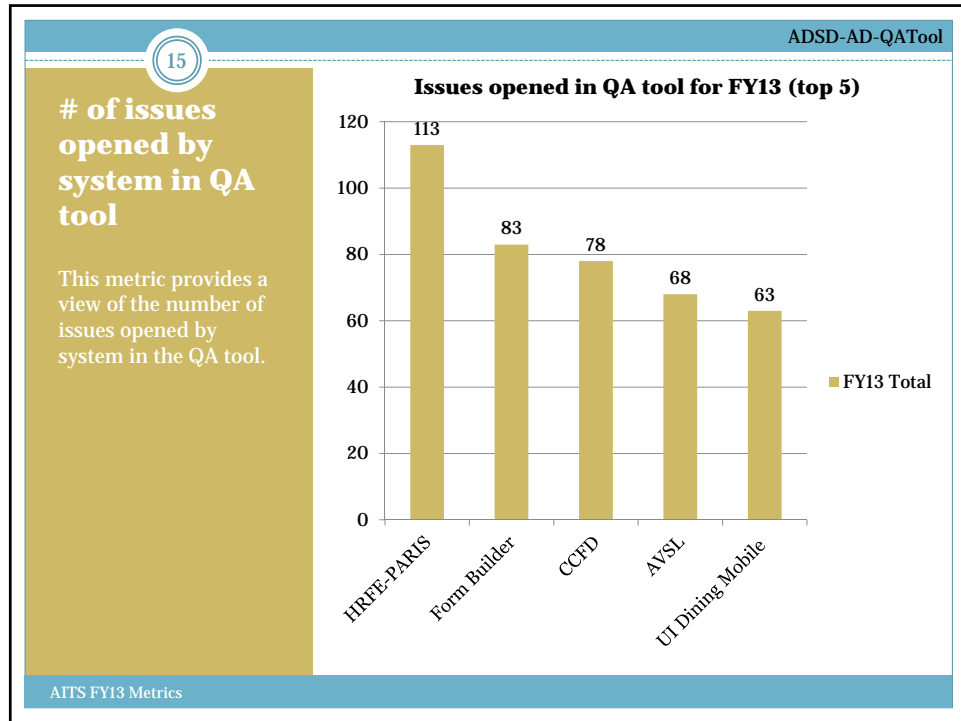


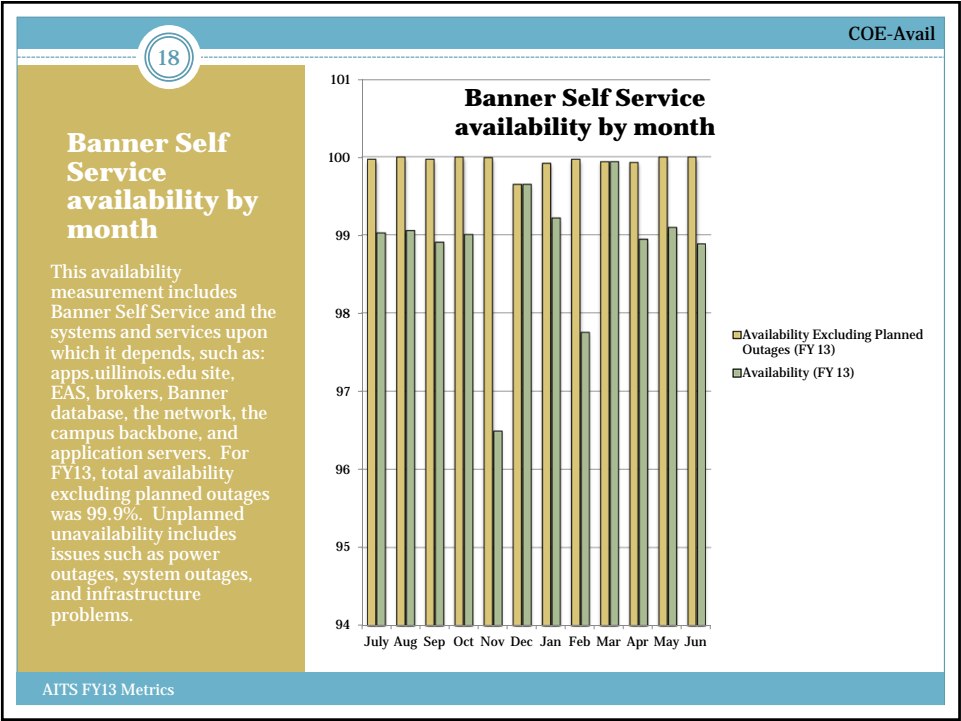
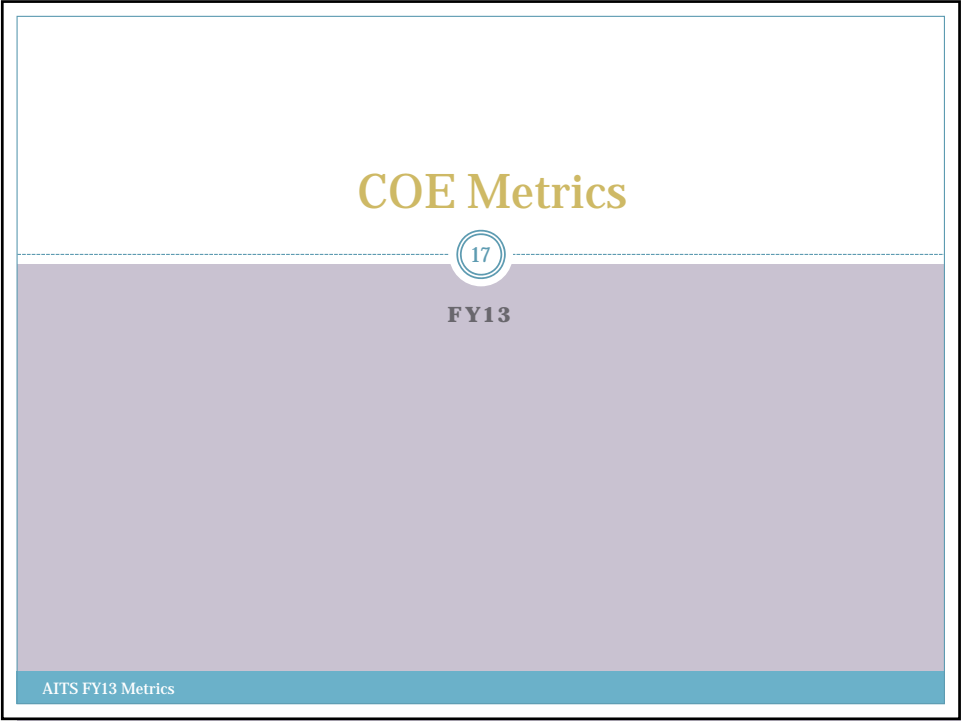


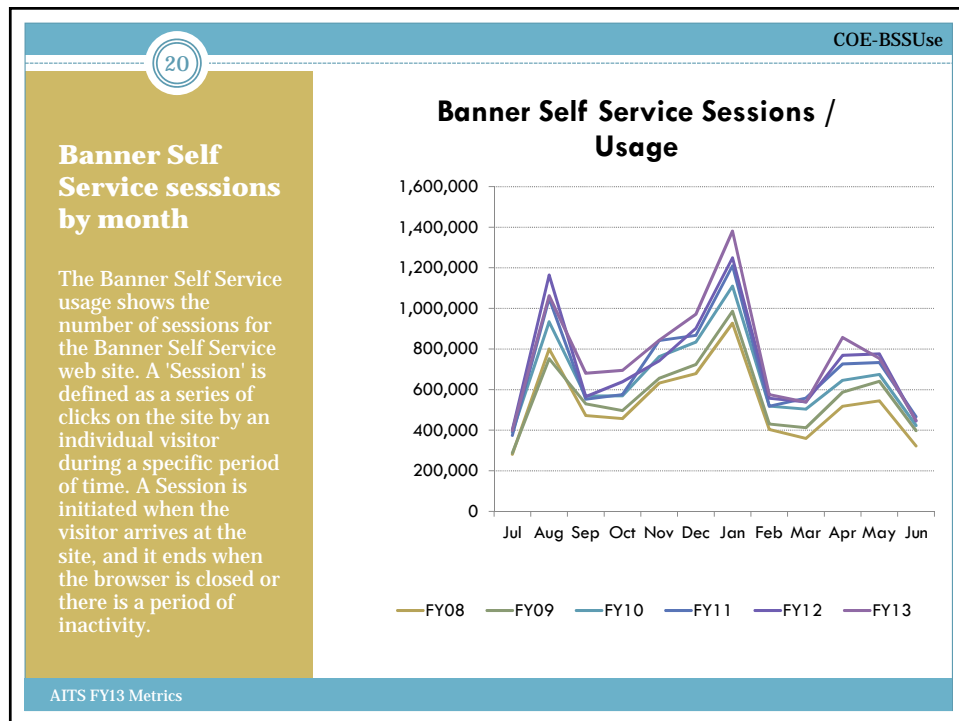
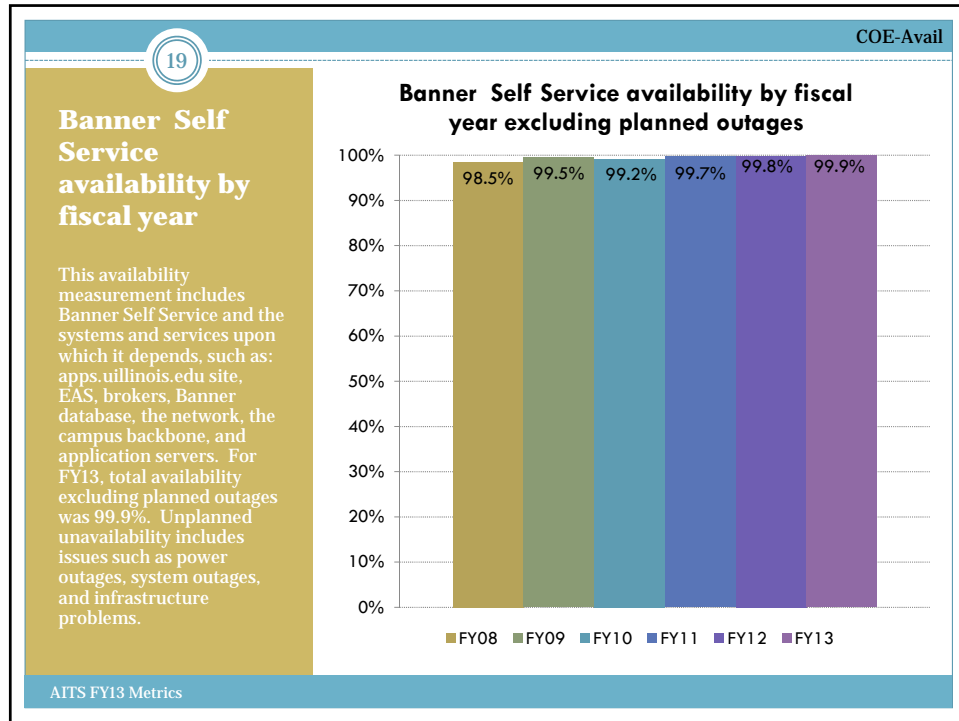


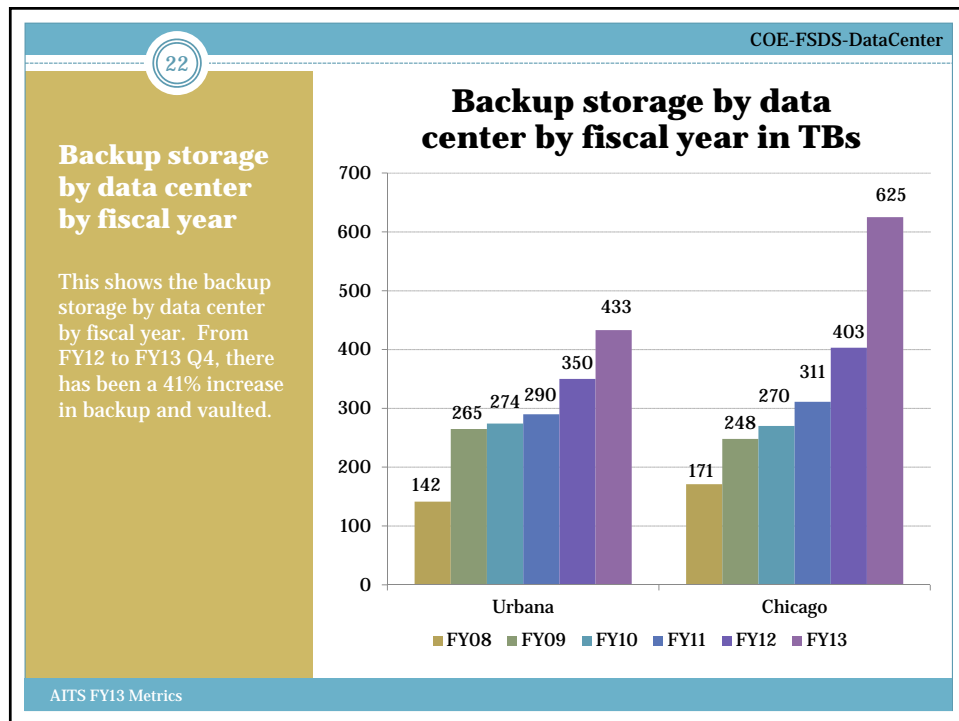
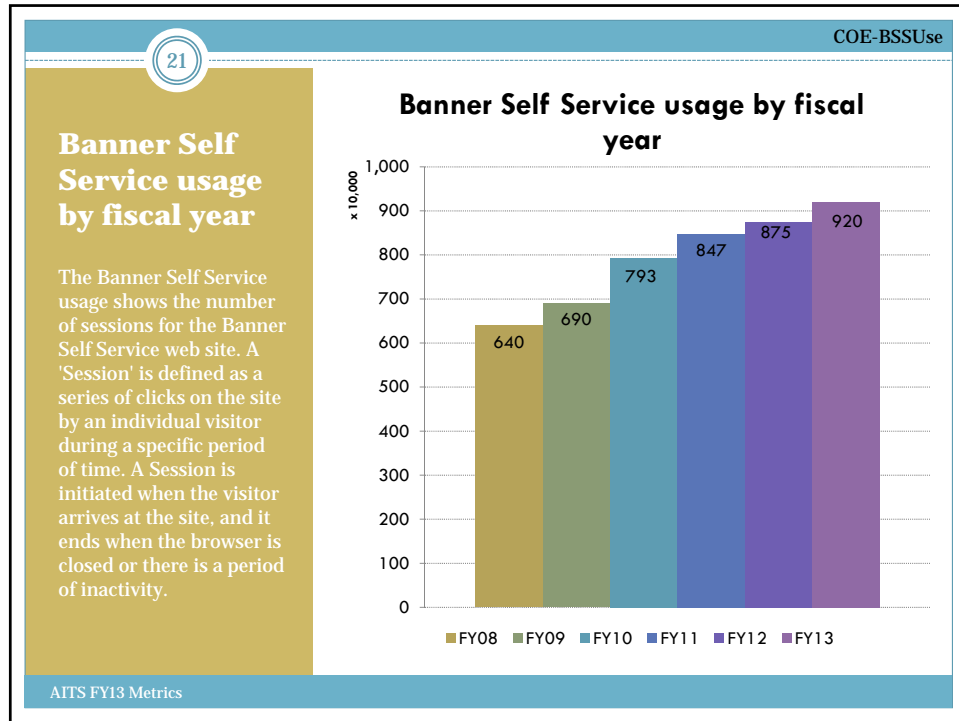


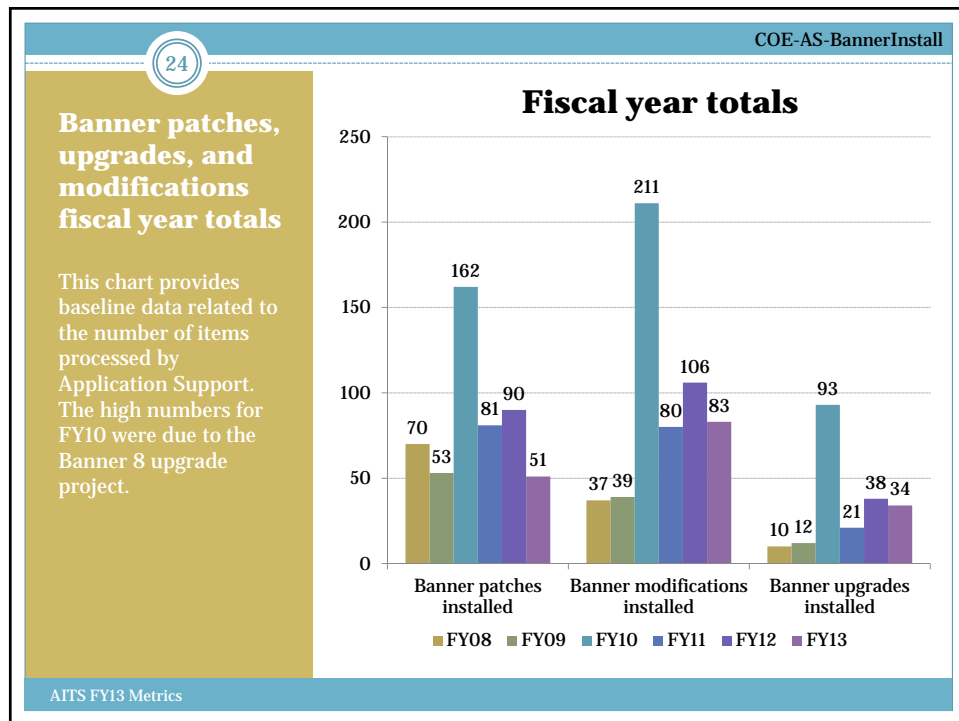
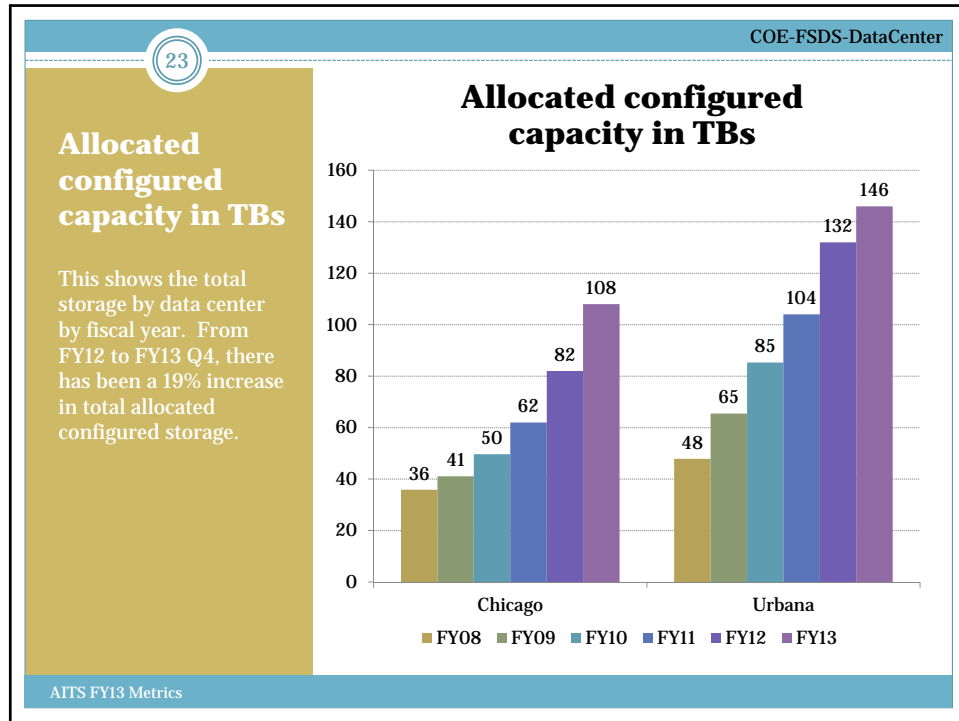


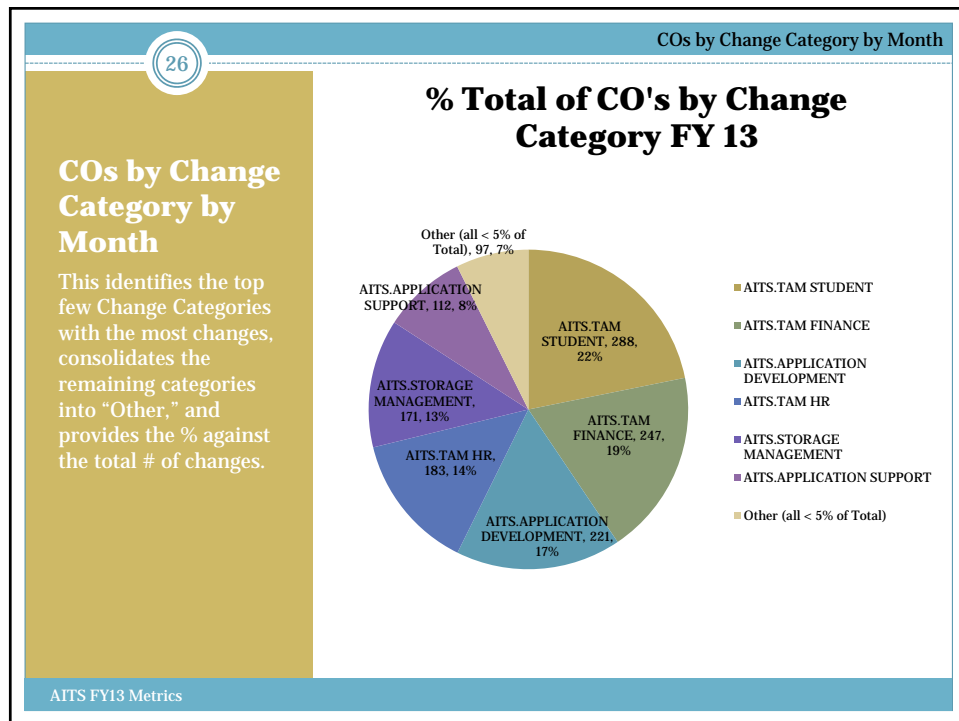
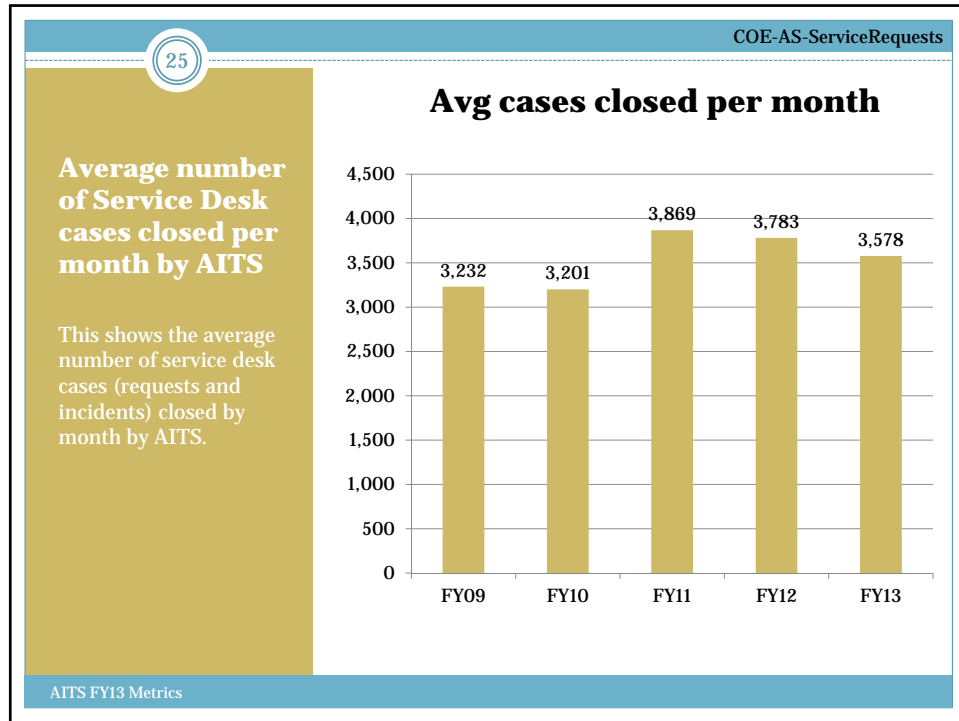


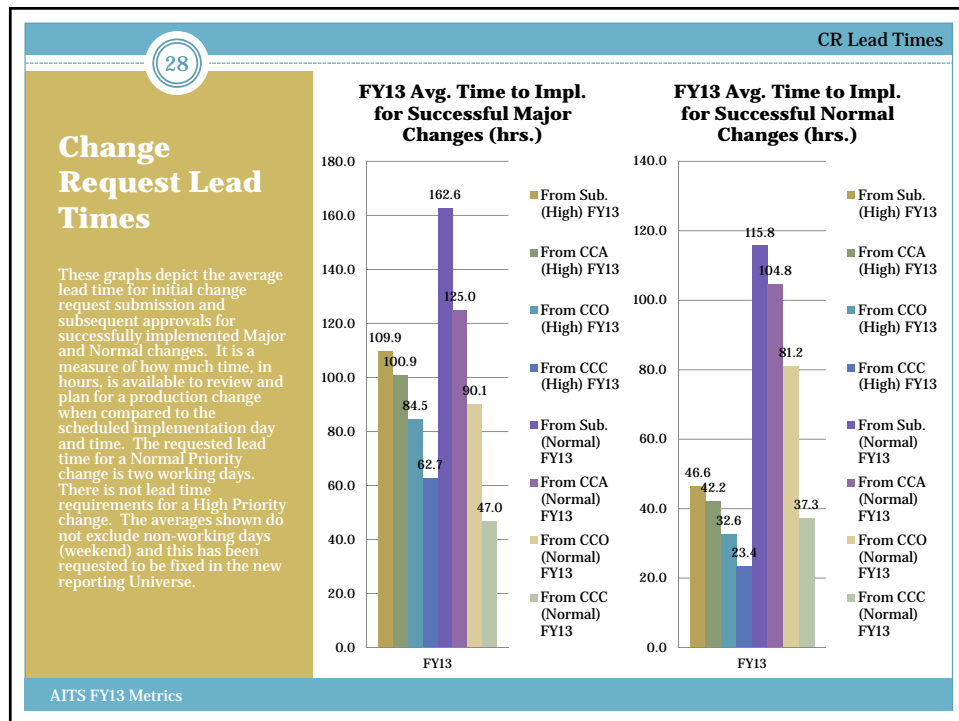
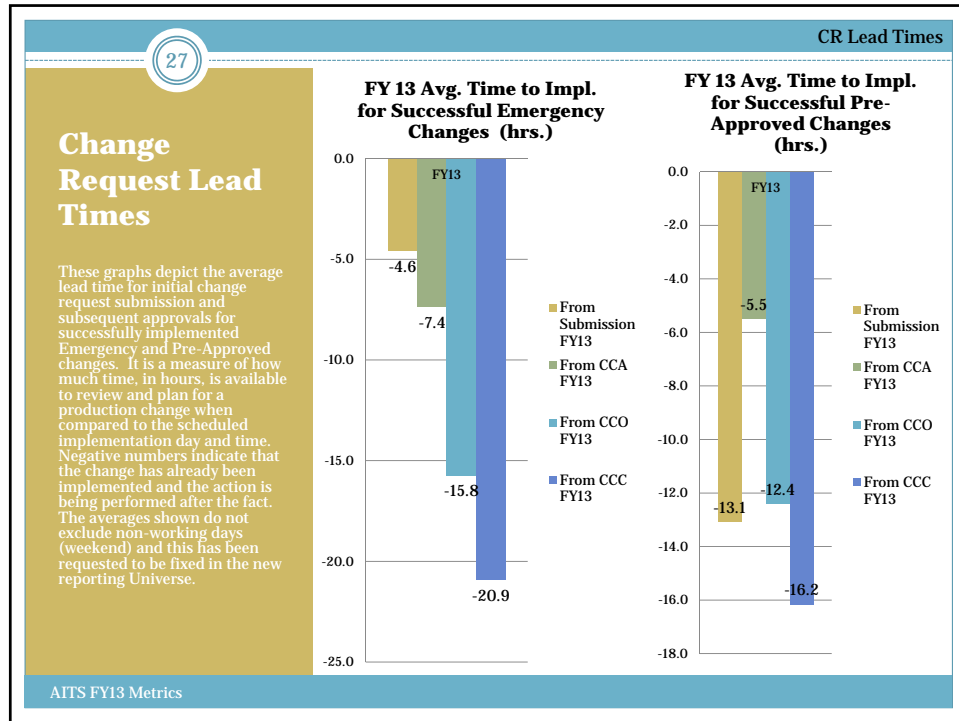


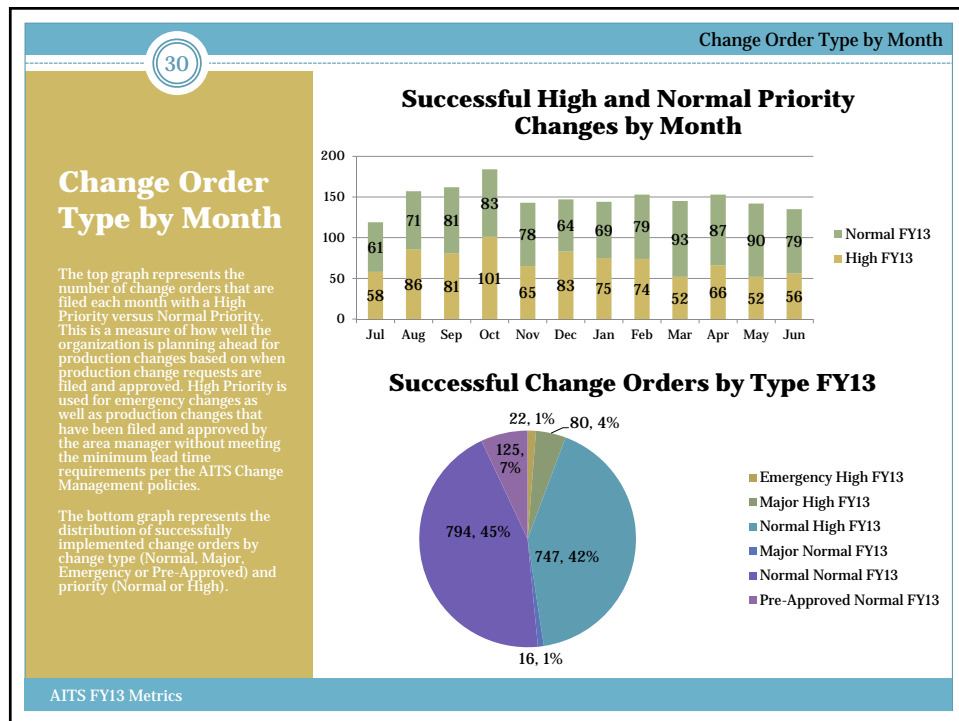
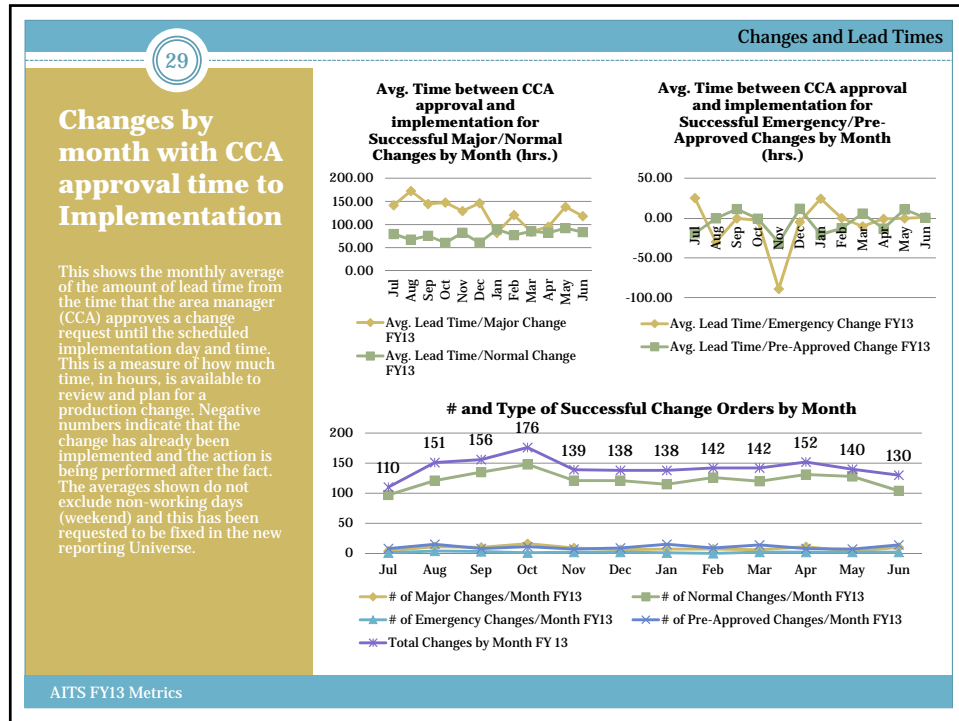


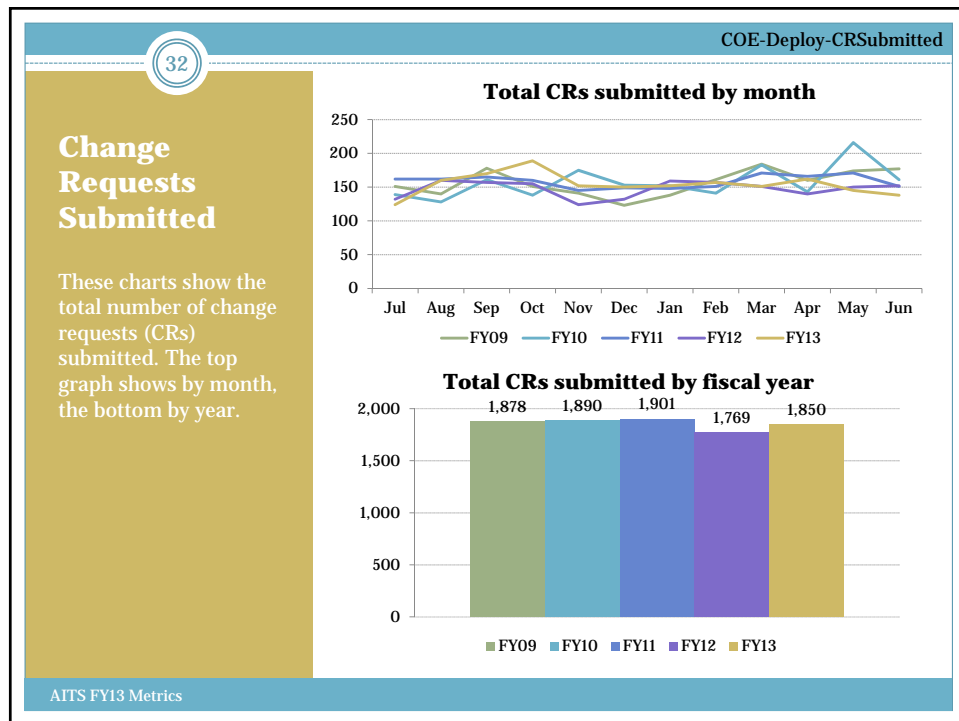
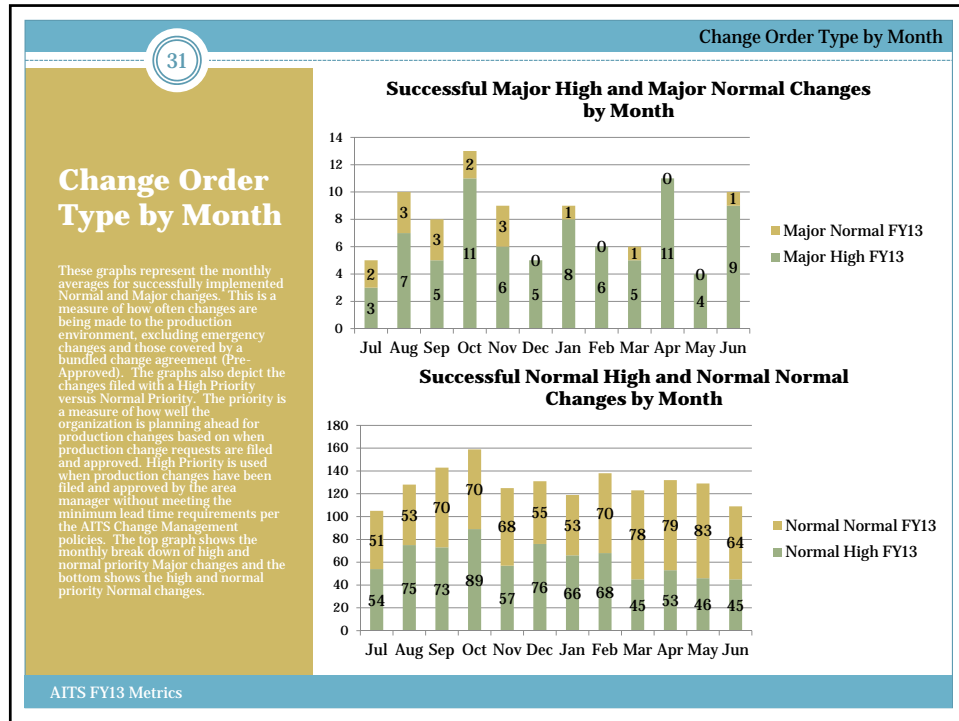


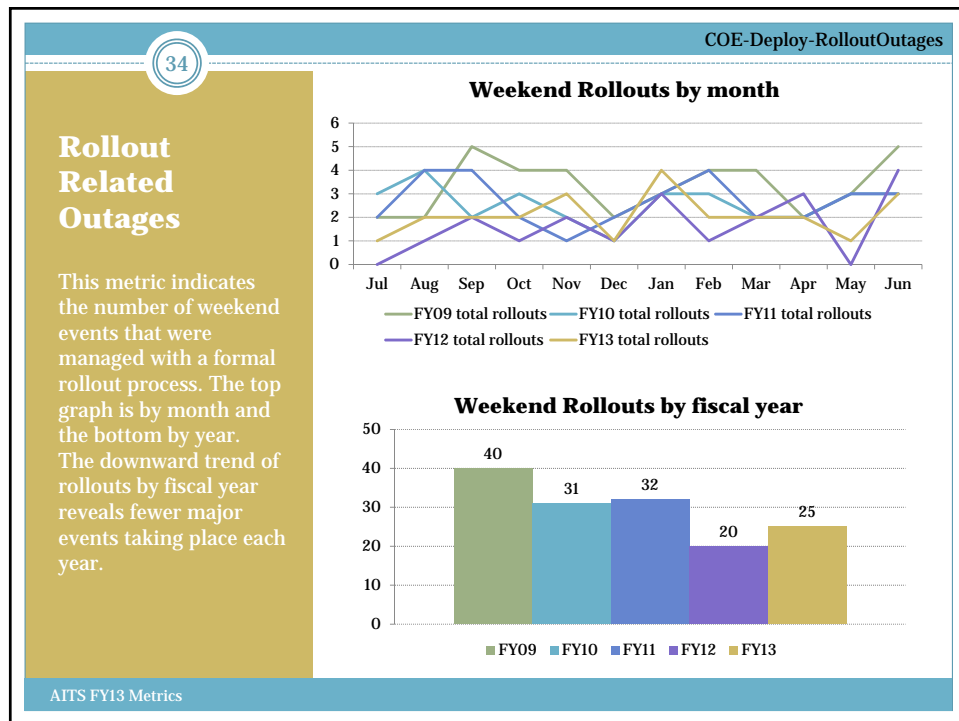
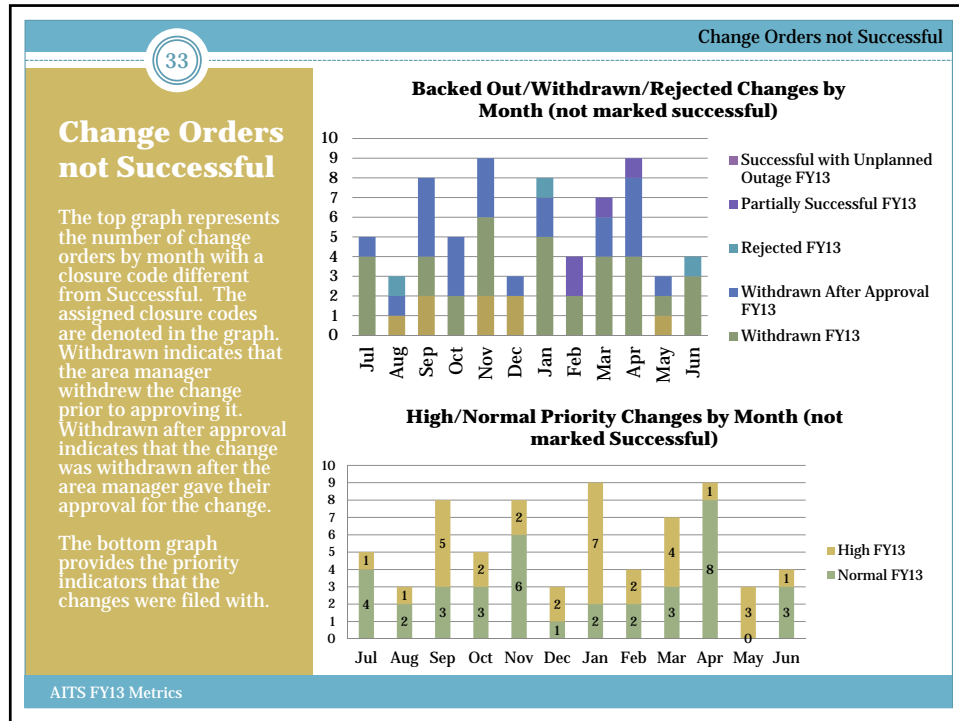


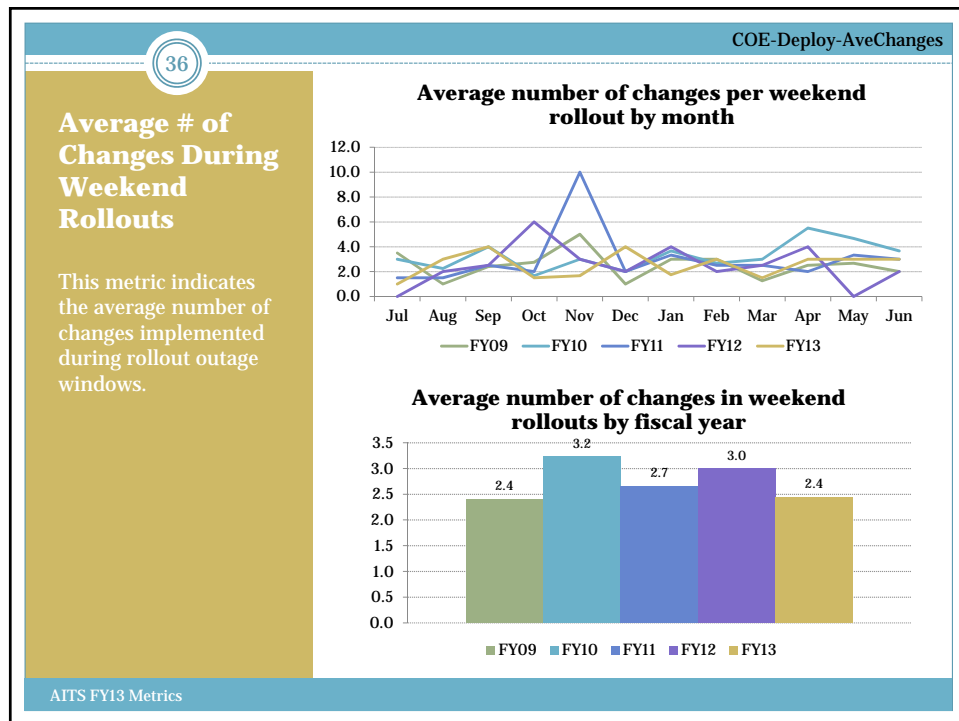
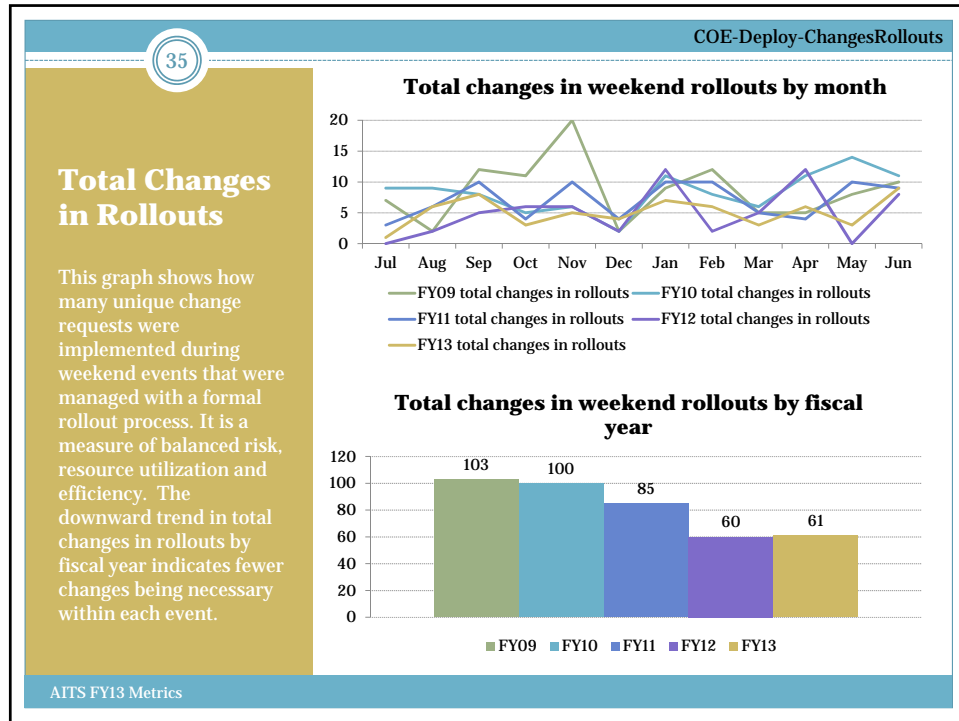


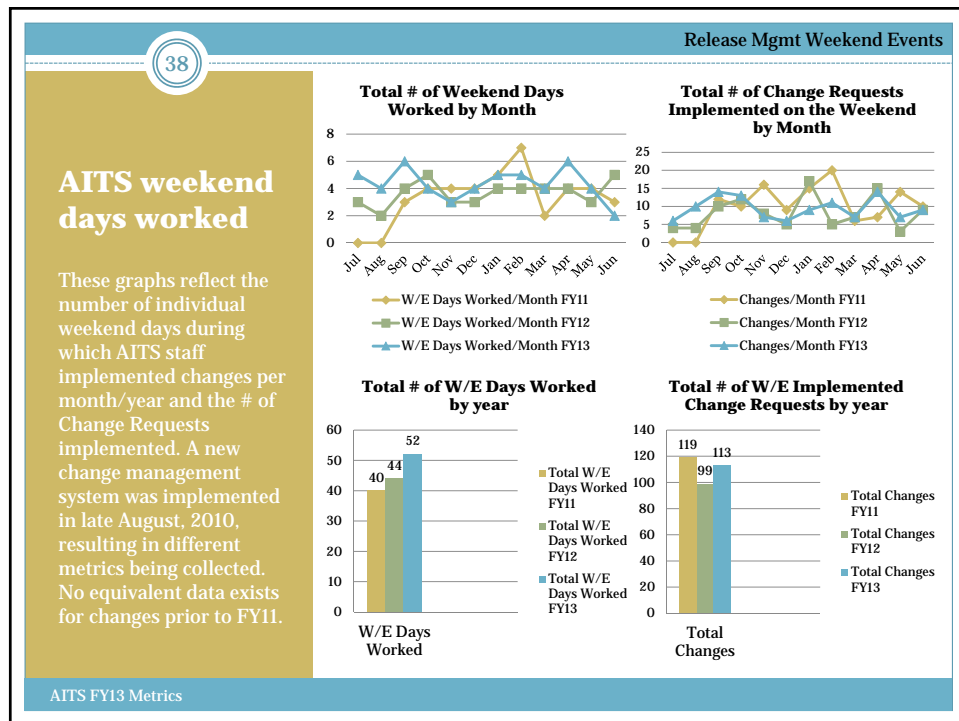
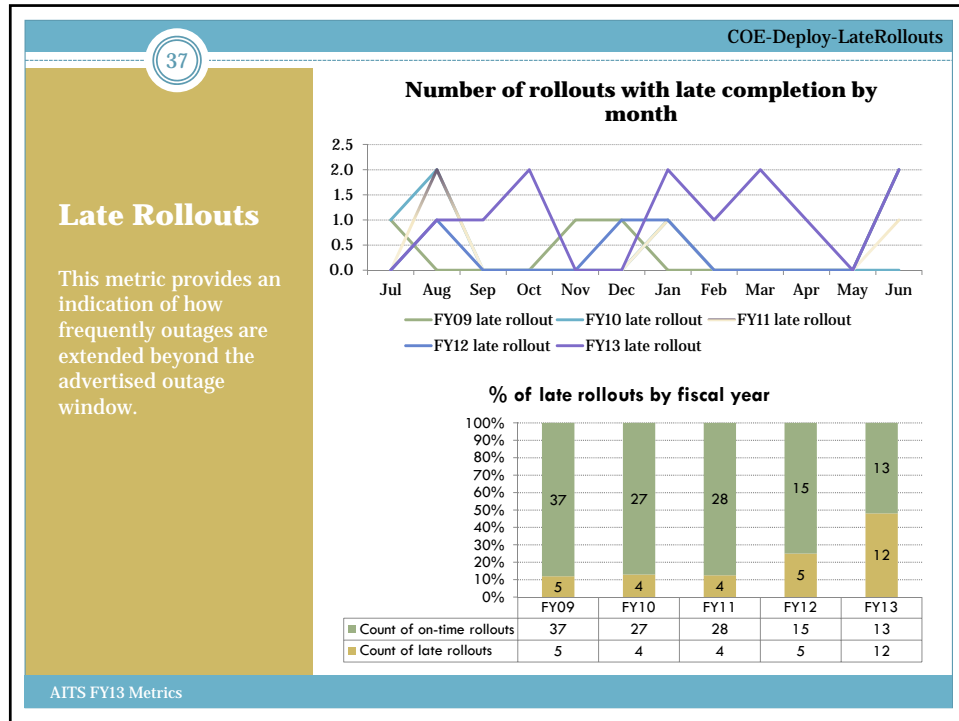


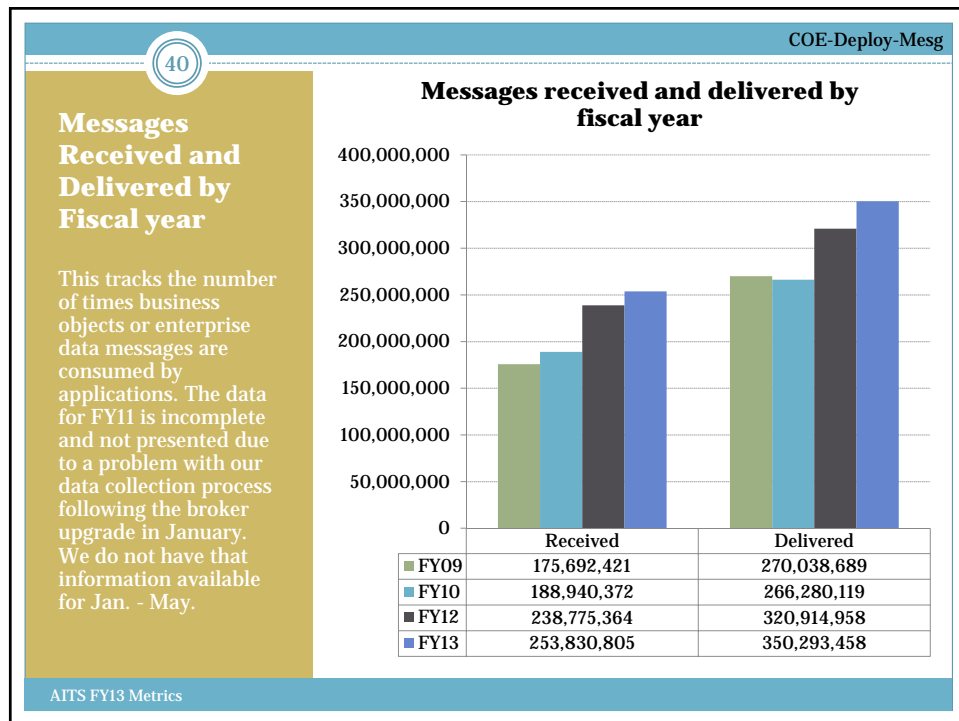
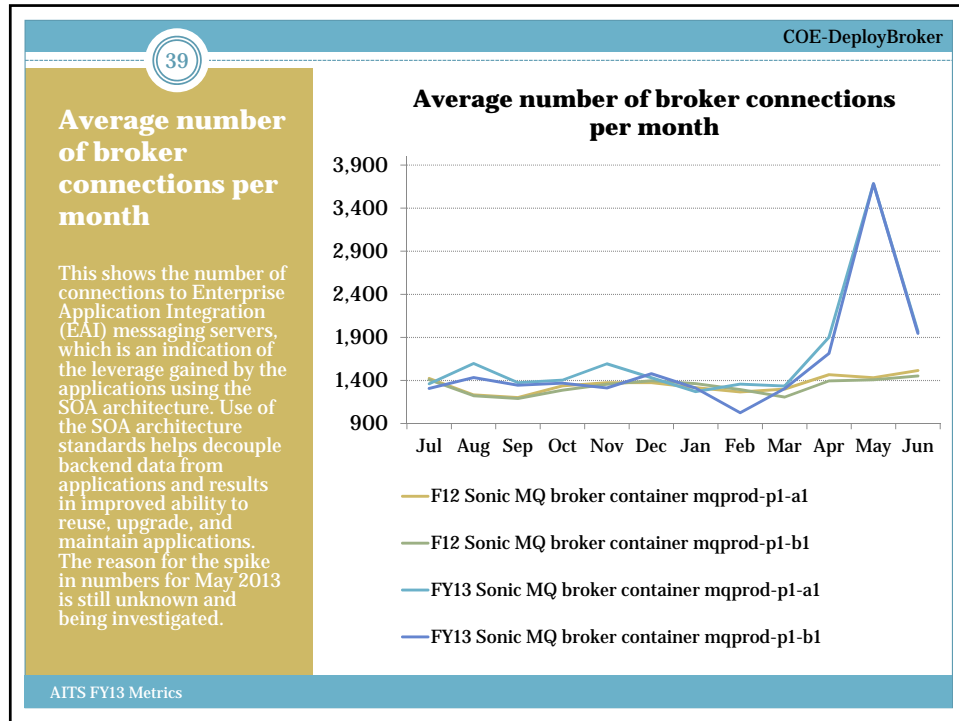


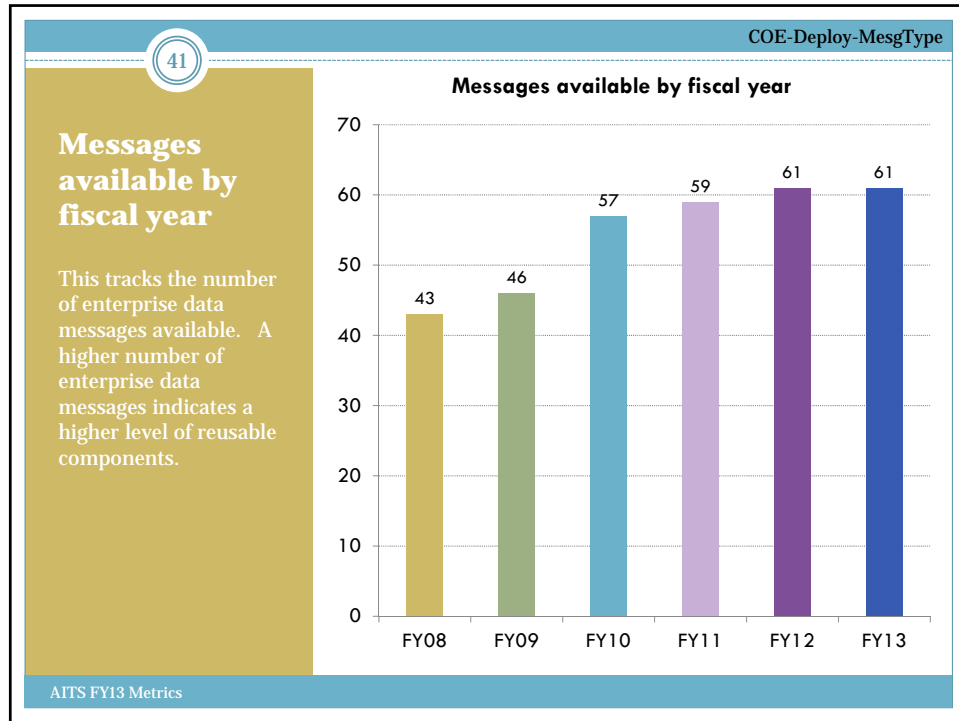












COE-Deploy-SyncMesgConsump

42

### Sync message consumption

This tracks the number of times an enterprise data message is consumed by applications. It is an indication of the leverage gained by these reusable components.

Sync Message	FY10	FY11	FY12	FY13
AccountIndex	30,076	30,738	30,460	27,616
AccountingElement	25,217		114,050	136,938
AdministrativeRollupOrganization			18	6
AdmissionsApplication	2,869,736	3,237,297	2,475,119	2,630,958
BaseJob	385,651	200,714		
BasicEmployee	477,147	345,067	411,565	454,511
BasicPerson	10,583,461	8,376,280	11,347,576	13,396,217
CollegeOrganization	28	34	44	28
Commodity	15		26	15
DepartmentOrganization	2,508	3,627	420	320
EnterpriseCode	7,630	18,775	172,044	2,824
EnterpriseUser	54,593	5,116	429	529
ExternalAdmissionsApplication	108,102	4,767		
InstitutionalIdentity	238,739	231,939	292,638	279,818
JobAssignment			1,441,419	3,480,744
NetId	142,258	12,614	862	1,058
NetIdAssignment	1,478,699	1,712,126	3,421,263	1,595,749
PurchaseOrder	31,790	0	203,191	290,088
RegisteredAgent	1,542	208	265	305
SchoolSubcollegeOrganization	32	54	65	36
ShipToLocation	50		169	199
SubjectOrganization	194	683	80	158
Supplier	1,595		13,090	14,489
Sync	1,038	566	277	1,986
UserSecurityQuestion	1,833	1,272	1,092	1,128
Vendor	104,936	28,441	33,660	40,279
VendorEntity	101,836	18,811	22,599	48,811
VendorPerson	6,083	1,079	1,007	1,311
<b>Grand Total</b>	<b>16,654,789</b>	<b>14,230,208</b>	<b>19,983,428</b>	<b>22,406,121</b>

AITS FY13 Metrics

