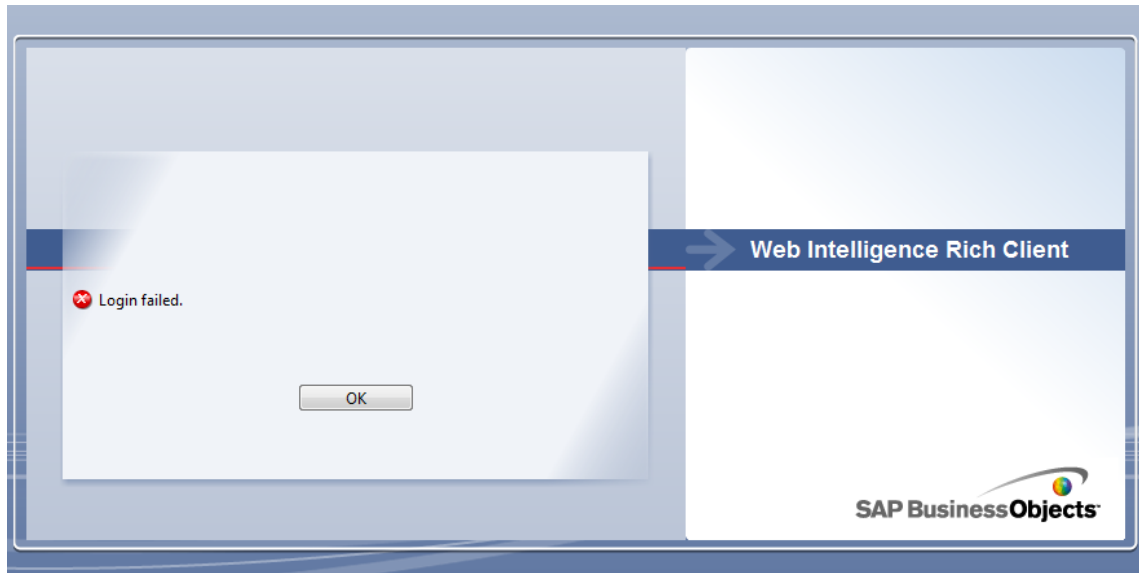


Error: Login Failed

The Login Failed error message occurs when you are attempting to log into the previous version of Web Intelligence Rich client on your desktop. This version is no longer supported and will not allow you to login.



Solution: Download the New software to your Computer

1. Please refer to the [Web Intelligence Rich Client 4.1 Installation Guide](#)
2. Once the software is installed and set-up, it is found at:

Start > All Programs > SAP Business Intelligence > SAP Business Objects Web Intelligence.