
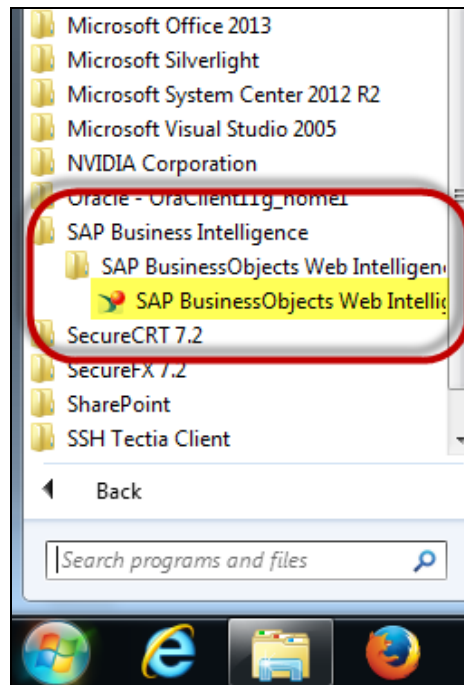


Logging into Web Intelligence Rich Client

Opening Web Intelligence Rich Client

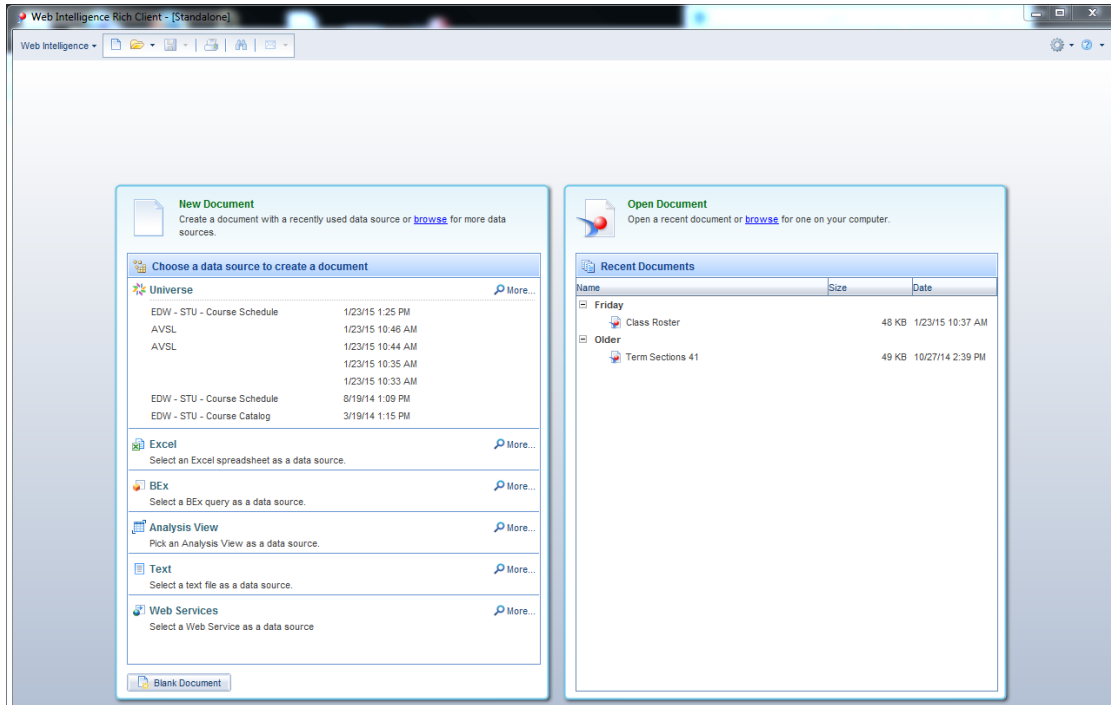
1. Open **SAP Business Objects Web Intelligence**
 - a. Open the Windows Start menu 
 - b. **All Programs**
 - c. **SAP Business Intelligence**
 - d. **SAP Business Objects Web Intelligence**



The Web Intelligence Home Page is displayed.

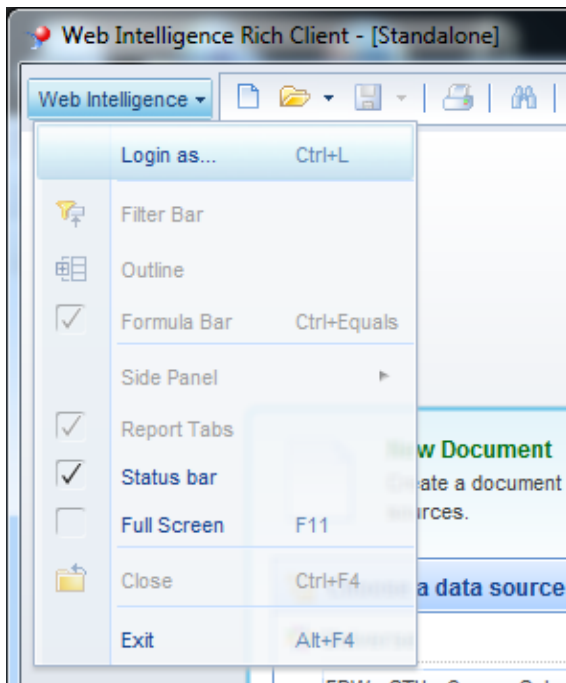
Note:

You will not be prompted to enter your Business Objects login credentials automatically. At this point, you are in the Web Intelligence software in Disconnected mode. You will need to login with your Business Objects credentials prior to running reports, or creating new reports.



Login to Web Intelligence (Connecting to the Server)

1. Open the **Web Intelligence** menu in the upper left corner of the screen.
2. Select **Login As**



3. Enter your Business Objects User Name and Password, then click **Log On**

The screenshot shows a window titled "User Identification" with a yellow header bar. Below the title bar, the text "SAP BusinessObjects Web Intelligence" is displayed in a large, bold font. Underneath, a smaller instruction reads "Enter your user information and click Log On." The main area contains a form with the following fields: "System:" with a dropdown menu showing "urbboe41qa4.ad.uillinois.edu:6400"; "User name:" with a text box containing "trishak"; "Password:" with a masked field of ten dots; "Authentication:" with a dropdown menu showing "Enterprise"; and a checkbox labeled "Use in Offline mode" which is currently unchecked. At the bottom left is the SAP logo, and at the bottom right are two buttons: "Log On" and "Cancel".

You are now logged in to Web Intelligence and connected to the server.

